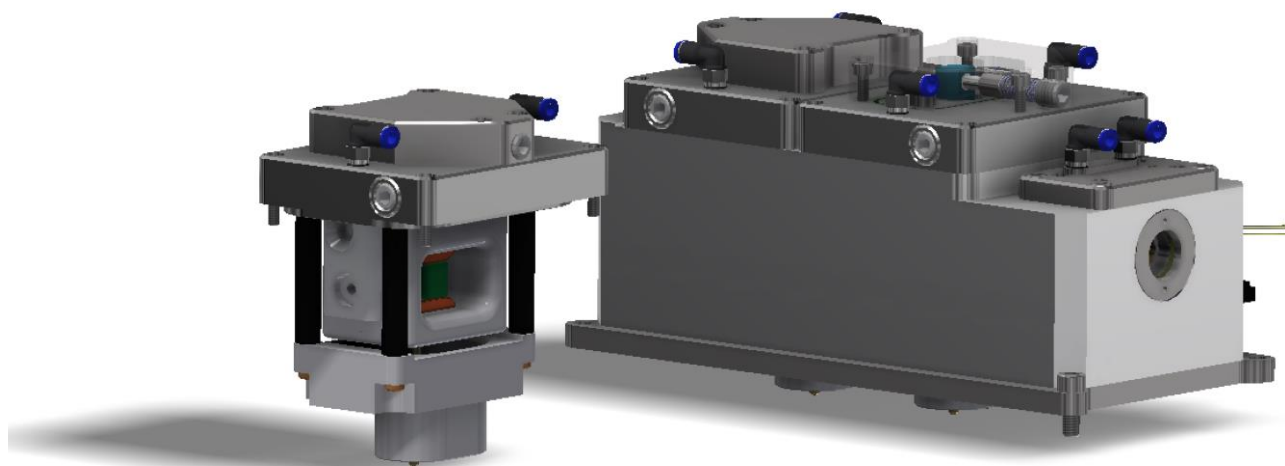


Pockels Cell Module PCM-20200624



PCM module for completely enclosed beam, allowing controlled air-flow along beam path

- ▶ **mini-clean room environment:** overpressure prevents dust from entering
- ▶ **water cooled apertures** on both sides to protect BBO crystals
- ▶ interface for connecting additional modules, SM1 mounted optics or window
- ▶ **easy alignment/exchange** of pre-aligned BBO crystals mounted in **removable holder**
 - ▶ damage threshold < 500 MW/cm² for 10 ns, 10 Hz
 - ▶ crystal vibration damped, for MHz operation*
 - ▶ apertures of 6 mm, 9 mm and 12 mm available

**patent application DE 10 2013 012 966.4*

- ▶ sensors: damage detection of optics + NTC + SHT21, no cable and tubes in beam area
- ▶ basic **self status check**, interface via **CAN BUS**

HV switch

- ▶ to be installed in compartment below optical base plate or next to Pockels cell module
- ▶ for kHz (< 50 kHz) or optionally MHz operation
- ▶ prepared for **GALDEN®** cooling of driver for operation at > 1 kHz

HV supply unit for installation in rack

DAUSINGER+
GIESEN GMBH



contact • Dausinger + Giesen GmbH
Rotebühlstrasse 87
70178 Stuttgart
Germany

phone • +49 (0)711 907060-550
fax • +49 (0)711 907060-99
email • info@dausinger-giesen.de
internet • www.dausinger-giesen.de